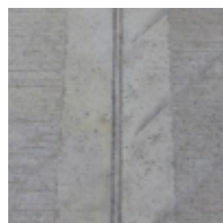
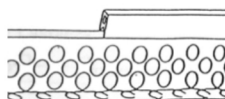
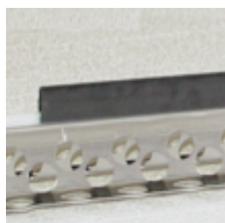


Top Extender



- Material: PP plastic
EU directives 67/548/EEC and 1999/45/EC
- Mounted directly on Screed rail
- For contraction joints
- For thicker top coat layer
- Removable after casting – replaced with sufficient sealant
- Left in floor, designed possible with colored Top extension list.



Art.no	Height (mm)	Length (mm)	Width (mm)	Weight/pc (kg)
23CFL35	30	3500	8	0,8
23CFL22	30	2200	8	0,5

Recommended accessories

- Sealant for outside use
- Sealant for inside use